



Desk Drawer and Desk End Installation Instructions

TOOLS AND SUPPLIES NEEDED

- ◆ Hammer
- ◆ Level
- ◆ Powered Drill and 3/32" and 3/16" Drill Bits
- ◆ Tape Measure
- ◆ Phillips Screwdriver
- ◆ 1" x 4" scraps and other shim material
- ◆ A few #8 to #16 nails or screws

PREPARATION

Remove cabinet from carton and remove bag of hardware and drawer from cabinet.

GENERAL CONCEPT

The desk drawer is not a stand alone item. It is designed to fit between two cabinets, a cabinet and a wall, or wall/cabinet and a desk end (see Figure 1).

FIRST

Mount Desk Drawer

Hold desk drawer in place (flush to top and front) next to the drawer stack, vanity or desk end (see Figure 2).

Place 1" x 4" and other wood shims between the two cabinets (see Figure 2). Attach desk drawer using four #8 to #16 nails or screws (size varies based on the thickness of shims).

SECOND

Attach Unit to Wall, Second Base Cabinet, or Desk End

If mounting to a wall, set cabinet and desk drawer in place and level the cabinet (see Figure 3). Locate stud(s) — put shims between desk drawer and wall as outlined in the "Second" step. Attach to wall at stud(s) with 2 nails or screws in each stud.

THIRD

Install Top; Insert Drawer and Attach Pull

Attach counter Top or Marble Top. Insert drawer into the desk drawer unit. Install drawer pull using the hardware and screws provided.

Figure 1

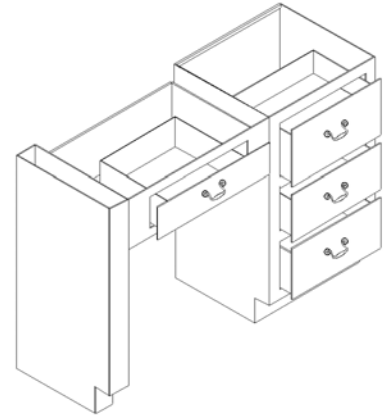


Figure 2

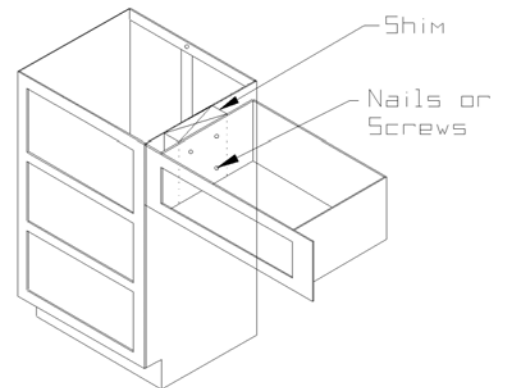


Figure 3

